



VEXO110A

10" high performance 2-way active loudspeaker

Highlights:

- Compatible with AUDAC Touch™
- Compatible with TouchLink™
- Dante™ expansion port
- Advanced DSP and loudspeaker management
- High sound pressure levels with tight driver response
- DuraCoat™ texture paintwork
- Ball impact resistance
- User friendly mounting
- Horizontal and vertical mounting
- -90° to +35° inclination
- WaveDynamics™ supported

The VEXO series are compact high performance 2-way active loudspeakers and come in 3 different models, each of them with different sizes and performances meeting the requirements of every application. The low-frequency transducer, which is made out of high-quality materials, is combined with a 1.7" voice coil compression driver, enabling high sound pressure levels and a tight driver response with a rotatable 90° x 70° coverage pattern for a wide range of applications.

Thanks to the unique driver composition, the VEXO110A delivers a clear and natural sound with an RMS power of 300 Watts and a maximum power of 1200 Watt. The frequency response ($\pm 3\text{dB}$) starts from 65Hz up to 20 kHz and the sensitivity (1W/1m) reaches 96dB while a maximum continuous sound pressure level from 121dB can be achieved.

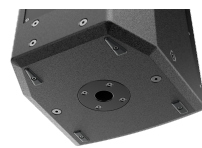
When not in use, the active versions of the VEXO series devices automatically go into an energy-saving standby mode. This means that active versions can also be used in fixed installations, as there is no need to physically shut them down after each use.

The construction of the cabinets is made of 12mm plywood with a polyurethane coating, making them resistant to any impact. The front side of the cabinet is finished with a powder-coated steel grill with acoustical foam. A recessed carry handle on the rear side makes carrying easy. Positioning and suspension of the speaker are easily achieved by using the standard 35 mm pole adapter on the bottom and the M10 rigging points. Two speaker connectors provide reliable connections with easy link-through to cabinets.

The optional Clever U bracket allows mounting the high power 2-way cabinet both horizontally and vertically. An inclination of -90° to +35° ensures an optimal positioning. The optional MBK bracket even allows mounting the VEXO series to the ceiling which gives the opportunity to install the loudspeaker cleanly in any environment.

By installing the optional ANI44XT Dante™ audio network interface in the active loudspeaker, the VEXO series can be integrated into any Dante enabled AV network and transfer digital audio with any compatible solution on the market.

When the ANI44XT is installed the VEXO series will be



Certification:



compatible with AUDAC Touch™ and TouchLink™. Used for creating virtual zones by linking multiple compatible devices with each other. In AUDAC Touch™ you can select multiple amplifier channels that should react to the user as one zone.

The VEXO110A features the unique WaveDynamics™ innovation. Due to this DSP processor, the audio control and processing technology enable any user to effortlessly control the most advanced acoustic configurations. The integrated DSP allows pre-sets for full-range, satellite and custom configurations and can be loaded via the USB slot on the back of the device. The AUDAC Touch™ application allows to equalize and create personalised presets and control the equipped VEXO loudspeakers. When installing the ANI44XT, all personalised presets and settings can be adjusted from anywhere at any time.

Applications:

- Clubs
- Concert venues
- Education
- Sport facilities

Impedance:



System specifications:

Speaker type		2-way	
Max. Power		1200 W	
RMS Power		300 W	
Impedance		8 Ω	
Sensitivity (1W/1m)		96 dB	
Sound Pressure (Max. W/1m)		121 dB	
Frequency	Response (\pm 3 dB)	65 Hz - 20 kHz	
Dispersion	Horizontal	90°	
	Vertical	70°	
Crossover	Type	Passive built-in	
Drivers	HF	Compression driver with 1.7" VC and 1" throat	
	LF	12" (2.5" VC)	
Connectors	Remote control	RJ45	
	Input		2 x Combo XLR / 6.3 mm jack
			3-pin Euro Terminal Block (Pitch - 3.81 mm)
			3-Pin terminal block (linkthrough)
Inputs		XLR male (linkthrough)	
		USB port	
		RJ45 (Ethernet)	
Power	Consumption	Standby	3.2 W
		Idle	22.5 W

Product Features:

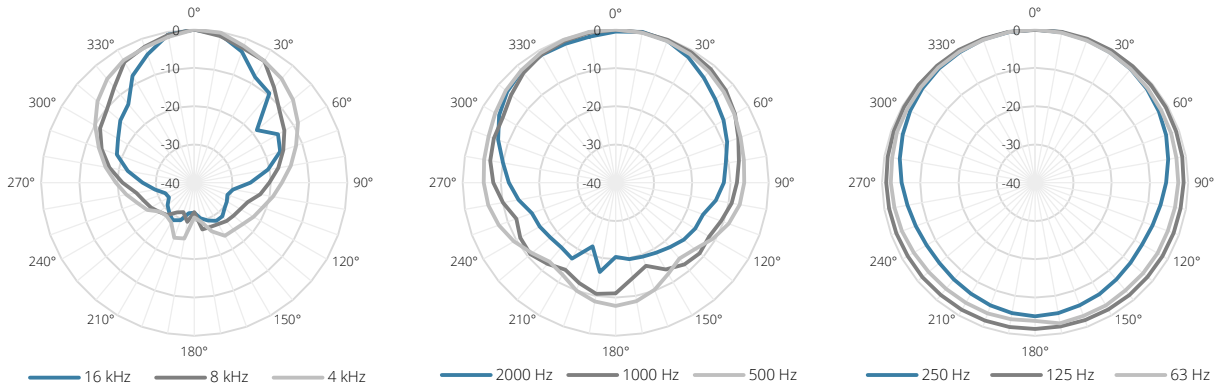
Dimensions		329 x 540 x 345 mm (W x H x D)
Weight		18 kg
Construction		12 mm high-quality plywood
Finish	Cabinet finishing	Polyurethane coating
Front finish		Powder coated steel grill with acoustical foam
Mounting & handling	Rigging points	10 x M10
	Stand fitting	35 mm pole adapter on bottom
Powerdrive mount		Powerdrive type 100 (127 x 70 mm)
Mounting & handling	Carry handles	On top
Colours		Black & White
Accessories	Optional	ANI44XT - Dante™ audio network interface

Variants:

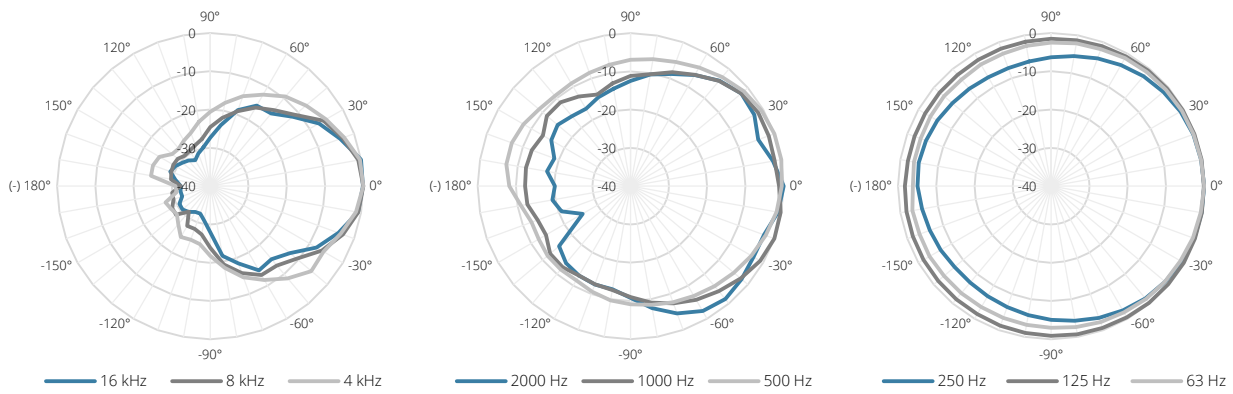
- VEXO110A/B - Black version
- VEXO110A/W - White version

Acoustical data graphs:

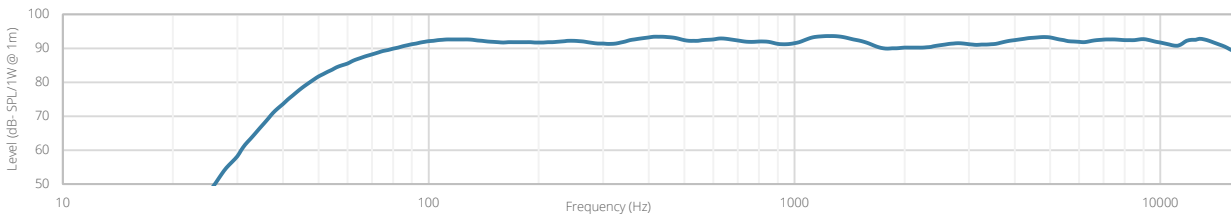
Horizontal Polars:



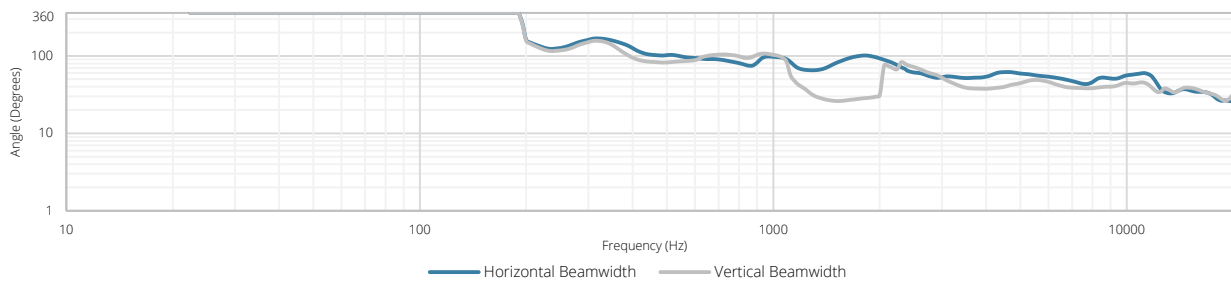
Vertical Polars:



Sensitivity:



Beamwidth (-3dB):



Directivity index:

