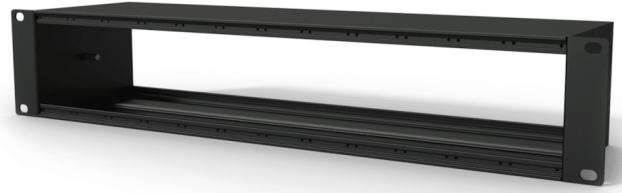


Highlights:

- Flexible structure for system integration & connectivity
- Wide variation of compatible modules available
- Stores 12 units of CASY modules on front & rear
- 19" Rack mountable (2 HE)
- 120 mm usable depth
- Pre-threaded mounting profile for easy assembly
- Aluminum extruded construction with steel side ears
- Structured and scratch resistant black powder coating



Product information:

The CASY001 is a 19" rack mountable chassis which can be fitted with 2 x 12 modules from the CASY range. The flexible and modular structure ensures maximum versatility, allowing the system to be adapted to project specific requirements. Possibilities range from audio, video and data interconnection, to power distribution, internal rack supplies and many more. The aluminum top and bottom construction features pre-threaded hole inserts allowing module installation with a maximum of 12 units on both front and rear side. Modules can be fixed inside the unit using the included M3 screws, while the side ears are fitted with holes for fixation to a 19" equipment rack. The side ears are constructed out of cold-rolled steel with internal pillars for chassis grounding. The overall construction is finished in a black (RAL9004) structured and scratch resistant powder coating.

Product Features:

Dimensions		19.016 x 3.46 x 4.72 " (W x H x D)
Weight		3.26 lb
Construction		Alu extrusion with steel side ears
Module	Units	12 x front side & 12 x rear side
	Assembly	Pre-threaded M3 screw holes
Mounting		19" Rack mount (2HE)
Finish		Structured powder coating
Colours		Black (RAL9004)
Accessories	Optional	CASY021/B - 12 space strain relief
		CASYx0x - Blind / connector hole plates
		CASYx2x - XLR connector plates
		CASYx3x - Audio signal connector plates
		CASYx4x - Loudspeaker connector plates
		CASYx5x - Video connector plates
		CASYx6x - Data connector plates
		CASYx8x - Power connector plates
		CASYx9x - Other plates

Variants:

- CASY001/B - Casy chassis 12 space - 2he 19" mounting - 120mm - black

