



VEXO110

10" high performance 2-way loudspeaker

Highlights:

- DuraCoat™ texture paintwork
- High sound pressure levels with tight driver response
- Ball impact resistance
- Horizontal and vertical mounting
- User friendly mounting
- -90° to +35° inclination
- 70V/100V transformer optionally available

The VEXO series are compact high performance 2-way loudspeakers and come in 3 different models, each of them with different sizes and performances meeting the requirements of every application. The VEXO series loudspeakers consist of active and passive versions. The low-frequency transducer, which is made out of high-quality materials, is combined with a 1.7" voice coil compression driver, enabling high sound pressure levels and a tight driver response with a rotatable 90° x 70° coverage pattern for a wide range of applications.

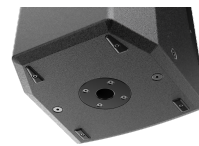
Thanks to the unique driver composition, the VEXO110 delivers a clear and natural sound with an RMS power of 300 Watts and a maximum power of 1200 Watt. The frequency response ($\pm 3\text{dB}$) starts from 65Hz up to 20 kHz and the sensitivity (1W/1m) reaches 96dB while a maximum continuous sound pressure level from 121dB can be achieved.

When not in use, the active versions of the VEXO series devices automatically go into an energy-saving standby mode. This means that active versions can also be used in fixed installations, as there is no need to physically shut them down after each use.

Using an optional 70V/100V line transformer enables the VEXO series to be used in 70V or 100V systems. By removing the backplate and replacing it with a 70V/100V backplate on which the module is integrated, the high-performance loudspeaker is able to apply in a 70V/100V system.

The construction of the cabinets is made of 12mm plywood with a polyurethane coating, making them resistant to any impact. The front side of the cabinet is finished with a powder-coated steel grill with acoustical foam. A recessed carry handle on the rear side makes carrying easy. Positioning and suspension of the speaker are easily achieved by using the standard 35 mm pole adapter on the bottom and the M10 rigging points. Two speaker connectors provide reliable connections with easy link-through to cabinets.

The optional Clever U bracket allows mounting the high power 2-way cabinet both horizontally and vertically. An inclination of -90° to +35° ensures an optimal positioning. The optional MBK bracket even allows mounting the VEXO series to the ceiling which gives the opportunity to install the loudspeaker cleanly in any environment.



Impedance:



Applications:

- Bars, restaurants
- Clubs, discotheques
- Live performances

System specifications:

Speaker type		2-way
Max. Power		1200 W
RMS Power		300 W
Impedance		8 Ω
Sensitivity (1W/1m)		96 dB
Sound Pressure (Max. W/1m)		121 dB
Frequency	Response (\pm 3 dB)	65 Hz - 20 kHz
Crossover	Type	Passive built-in
Dispersion	Horizontal	90°
	Vertical	70°
Drivers	HF	Compression driver with 1.7" VC and 1" throat
	LF	10" (2" VC)
Connectors		2 x Speakon compatible (Linkthrough)

Product Features:

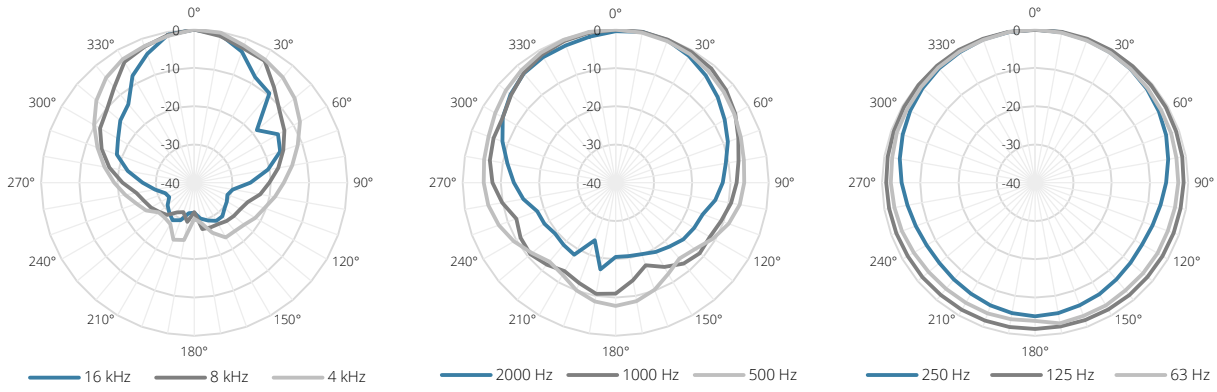
Dimensions		329 x 540 x 345 mm (W x H x D)
Weight		16.8 kg
Construction		12 mm high-quality plywood
Finish	Cabinet finishing	Polyurethane coating
Front finish		Powder coated steel grill with acoustical foam
Mounting & handling	Rigging points	10 x M10
	Stand fitting	35 mm pole adapter on bottom
	Carry handles	On top
Powerdrive mount		Powerdrive type 75 (108 x 50.8 mm)
Colours		Black & White
Accessories	Optional	70V/100V transformer module

Variants:

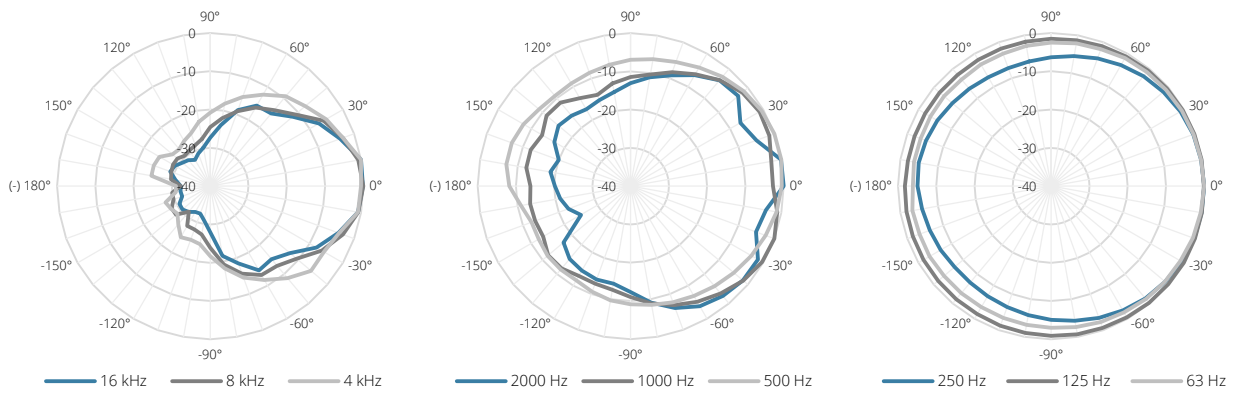
- VEXO110/B - Black version
- VEXO110/W - White version

Acoustical data graphs:

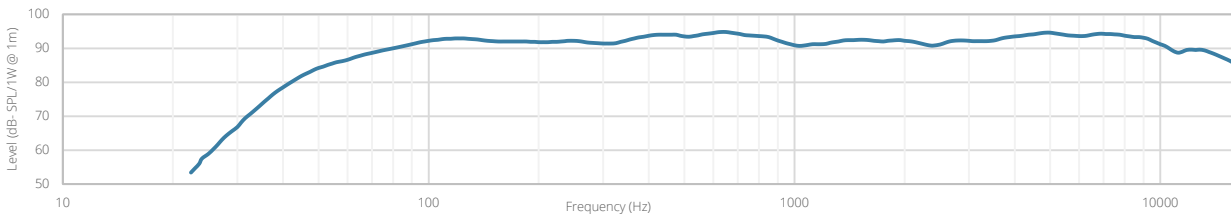
Horizontal Polars:



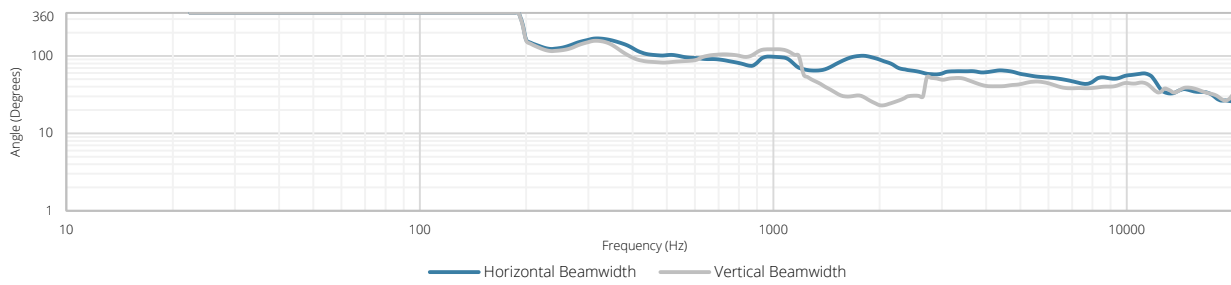
Vertical Polars:



Sensitivity:



Beamwidth (-3dB):



Directivity index:

