

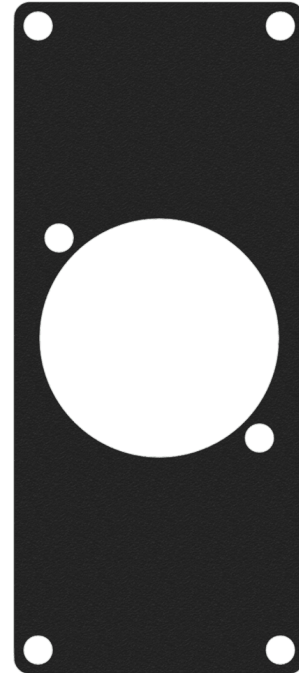
## CASY 1 space cover plate - 1x powerCON TRUE1 outlet connector hole

### Highlights:

- Structured and scratch resistant black powder coating
- Assembly screws included
- Compatible with any CASY chassis
- Flexible system for system integration & connectivity
- 1.5 mm thick cold rolled steel plate

### Product information:

The CASY108 module features one hole to fit powerCON TRUE1 outlet connector. This flexible structure for system integration & connectivity can easily be implemented in a wide variety of CASY chassis.

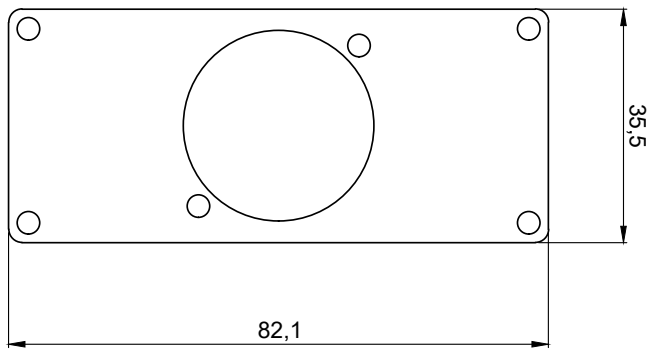



### Product Features:

Dimensions	13.98 x 32.32 " (W x H)	
Weight	0.057 lb	
Cut-out measurement	1.14 " (Ø)	
Module	Space	1

### Variants:

- CASY108/B - Black version



	<b>CASY108</b>	<b>Product description:</b> CASY 1 SPACE COVER PLATE - 1 X TRUE1 HOLE	<b>Unit height:</b> 2 HE
	<b>Weight:</b> 26 g	<b>Outer dimensions:</b> (w x h x d) 35,5 x 82,1 x 1,5	