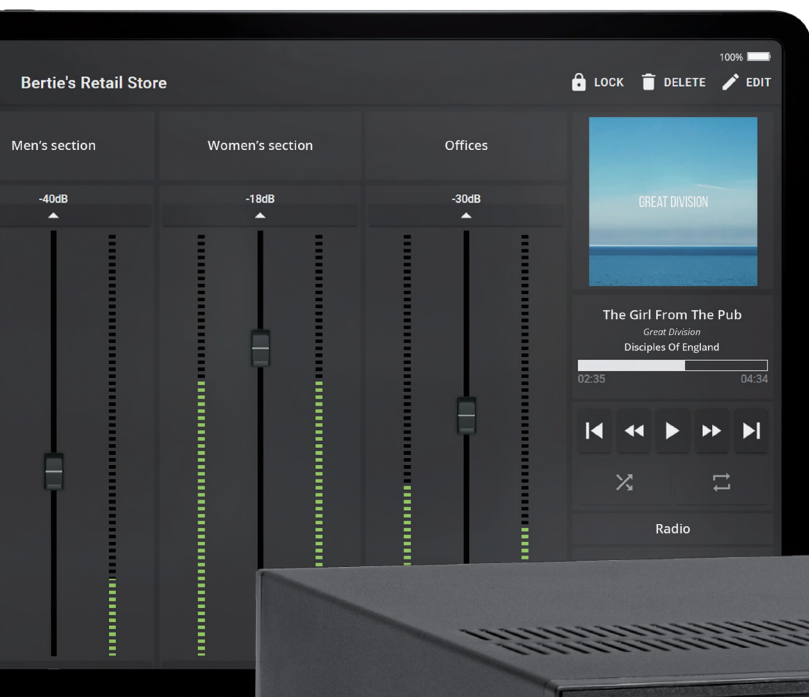


Inspired by sound



New Products 2020



# Index

AUDAC Touch™ 2	<i>Amplify sound, simplify control</i>	4
MFA series	<i>Multi-functional SourceCon™ amplifiers</i>	8
ALTI series	<i>2-way pendant speakers</i>	12
CELO8S	<i>High-end ceiling subwoofer</i>	16
KYRA series	<i>Design column speakers</i>	20
LINO series	<i>Column speakers</i>	22
NELO series	<i>Surface-mount loudspeakers</i>	23
CSK100	<i>Optional suspension kit NELO series</i>	23
MBK556	<i>Mounting pole for outdoor speakers</i>	24
ATEO2S	<i>ATEO2 with surface ceiling mount</i>	25
RMA40A	<i>Light track adapter mount for ATEO4</i>	25
WMM630	<i>Speaker back box</i>	26

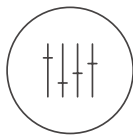
# AUDAC Touch™ 2

## Amplify sound, simplify control

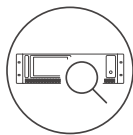
AUDAC Touch™ 2 completely changes the way an environment can be operated. By offering a freely available out of your pocket total system solution not only the sound system can be operated very easily, basic third party equipment such as projector screens/lights can be toggle controlled effortlessly as well. Audiovisual users choose AUDAC Touch™ 2 because they can fully personalize their own dashboard and add and control audio sources or streaming services such as Spotify.

With the needs of our users always in our minds, we have ensured that AUDAC Touch™ 2 goes far beyond the functionalities of the automatically recognized products.

Visit [audac.eu/touch](http://audac.eu/touch) for more information.



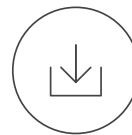
Total system control



Automatic device discovery



Custom dashboards



Freely downloadable



Drag and drop any widget from any device onto your dashboard. It's that simple!

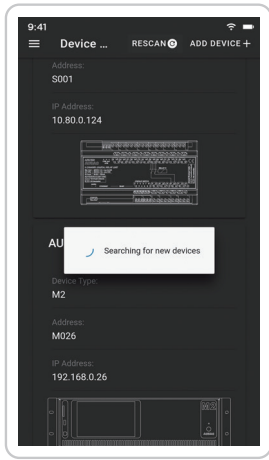


*"AUDAC Touch™ is the connection between audio- lighting- video- and automation systems. The ease-of-use in control of audio sources and volume control makes the application suitable for every project."*

Dominic van der Heiden, AudioBizz Benelux

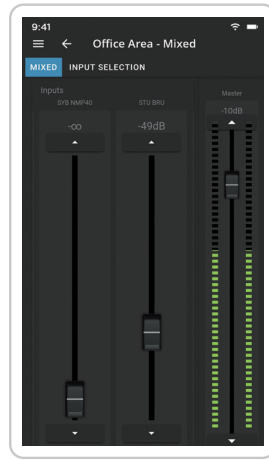


# What's new? Features



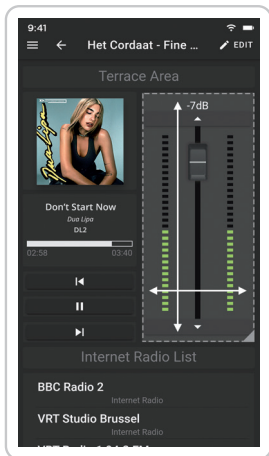
## Automatic device discovery

Adding your AUDAC devices has never been this easy! The automatic device discovery will automatically recognize all devices in your system, guaranteeing an easy and rapid setup of your own custom dashboard.



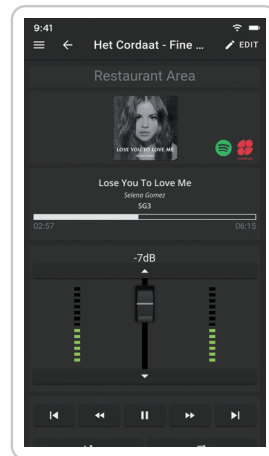
## Mixing functionality for M2

AUDAC Touch™ 2 allows you now to use all possible control functions, including the most advanced mixing capabilities of the M2 multimedia digital audio mixer from any smart device.



## Free scalable and placeable widgets

Create your own dashboard, AUDAC Touch™ 2 is 100% customizable which guarantees fully flexible positioning and scaling of a very wide range of different widgets.



## Professional licensed audio streaming

The NMP40 Audio Streaming SourceCon™ module is designed to bring the world's first total streaming solution for both residential and commercial applications\*, thanks to the collaboration with Spotify™ and Soundtrack Your Brand©.

\* Note that your national legislation may be different for your territory, check the website for more information.

# 100% customizable

## Select your widgets

### Output widget

Input selection and output volume adjustment is made possible through graphical slide faders combined with drop down menus.

### Licensed streaming\*

The NMP40, a professional audio streaming SourceCon™ module for Spotify™ and Soundtrack Your Brand© is now supported, allowing you to easily integrate and control both streaming services from within the application.

### Control each zone

Control audio players and other serial communication supporting devices in combination with APC100 gateways, such as WaveDynamics™ amplifiers.

### Adaptive dashboard

Fully flexible positioning and scaling allows you to design and group your dashboard according to your own preferences. Custom naming offers an intuitive and user friendly interface according to project specific requirements.

### Now playing

Currently playing media player information including album covers and additional carried information can be displayed on the main dashboard. Additional widgets for control can be separately selected.

### Basic 3<sup>rd</sup> party toggle control

Relay unit controls can get implemented, offering countless possibilities for expansion of your AV system to become a total system control platform.



\* Note that your national legislation may be different for your territory, check the website for more information.



# MFA series

## Multi-functional SourceCon™ amplifiers

The MFA series are multi-functional SourceCon™ amplifiers, offering true all-in-one solutions for countless applications, ranging from small bars & restaurants to medium sized retail stores, corporate installations, sports facilities and many more. The integrated two-channel amplifier can be used in low impedance stereo systems while bridging merges the output power to be used in constant voltage 70V/100V distributed audio systems.

This combined with the integrated SourceCon™ module offers the most compact and versatile audio system including audio source, processing, matrix system and amplification in a single and compact housing.



AUDIO SOURCE



AUDIO PROCESSOR



AUDIO MATRIX



AUTOMATION SYSTEM



AMPLIFIER

*“One for all  
and all for one.”*





The amplifier is designed as a two-channel amplifier using class D amplifier technology. It can be used for powering low impedance stereo systems with a maximum power of 2 x 80 Watt, while bridging to a constant voltage (100V and 70V) is possible with a maximum output power of 160 Watt. A switch-mode power supply allows a wide variation of mains voltages for global compatibility.

The integrated SourceCon™ module slot allows the implementation of any available compatible module, offering a true all-in-one solution. Typical applications are the implementation of an audio streaming module or internet radio module.

Additionally, a stereo line input allows connection for any kind of external audio sources. A balanced mic/line input allows connection for an announcement microphone with compatibility for condenser microphones using the integrated phantom power supply (15V). A priority switch overrides the background music

when enabled and compatibility with line-level sources (e.g. voice file players) is guaranteed by wide gain adjustment (0 dB ~ +50 dB).

Thanks to the 2.8" TFT display and the push rotary dial on its front, an unmatched user experience is achieved.

The MFA series are both RS232, RS485 and TCP/IP controllable allowing implementation with home & industrial automation systems and peripheral devices. Using the freely available AUDAC Touch™ 2 application, control and configuration can be done from any portable or non-portable device on any location and at any time.

Desktop installation or mounting in an equipment rack using the MBS1xx series mounting adapters is possible. The half 19" rackspace enclosure allows single installation in a 10.5" equipment rack, or side-by-side (two devices) in a 19" equipment rack.

- ① TCP/IP, RS232 & RS485 remote control/peripheral connections
- ② 1 Stereo (4Ω) or Mono (70V/100) amplified output + line/pre-amp output (configurable)
- ③ SourceCon™ Module slot (optional\*)
- ④ Balanced microphone input with priority and phantom power and unbalanced line input
- ▶ Integrated SourceCon™ module slot
- ▶ 2.8" TFT display with intuitive user interface
- ▶ Control through front panel & AUDAC Touch™
- ▶ Compact design (tabletop or half 19" rack mount)
- ▶ Advanced DSP and speaker management
- ▶ WaveDynamics™ compatible
- ▶ TCP/IP, RS232, RS485 and Dante (optional) compatible

	Stereo @ 4 Ω	Stereo @ 8 Ω	Bridge @ 70V/100V	THD+N	Signal/Noise	Freq Response	Dimensions	Weight
MFA208	2 x 40W	2 x 20W	80W	< 0.05 %	> 90 dB	20 Hz - 20 kHz	217.5 x 43.7 x 300 mm	2.20 kg
MFA216	2 x 80W	2 x 40W	160W	< 0.05 %	> 90 dB	20 Hz - 20 kHz	217.5 x 43.7 x 300 mm	2.25 kg

\* SourceCon™ modules optionally available. MFA series does not come pre-installed with one of these modules.

## Multi-zone optionality

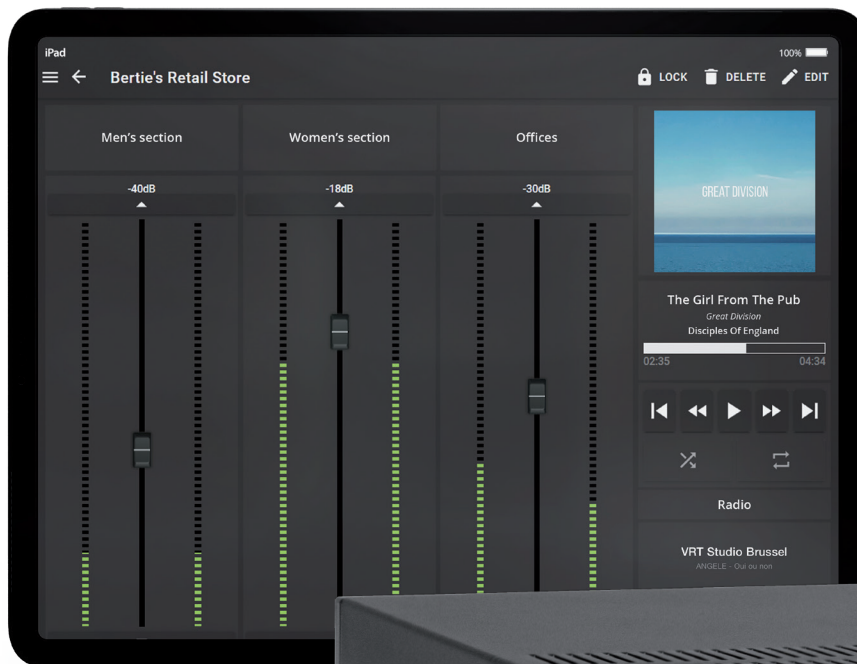
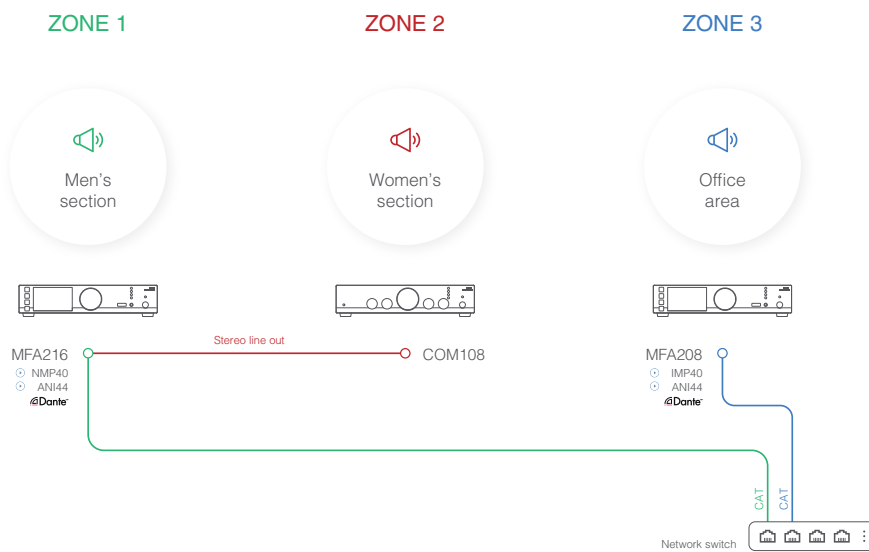
The MFA features a line out connection, creating the possibility for scaling the output power to meet both small and large scale project requirements. In case the internally available power turns out to be insufficient or in situations where future expansion is required, the line out connections offers the required solution.

## Two zone system

The function of the line out is user configurable, allowing to create one large zone or a real two-zone system with individual volume control for both outputs (internal amplifier and stereo line-out). They are digitally controllable through front panel, TCP/IP and AUDAC Touch™.

## Audio source sharing

When installed the (optional) ANI44 Dante™ audio network interface, music from the installed SourceCon™ module or connected line input signal can be shared throughout your Dante™ audio network to other compatible devices or amplifiers.



# *“The SourceCon™ family keeps on expanding.”*

SourceCon™ technology guarantees true plug and play implementation to any compatible device, allowing your media player to be tailored to fit any specific application. The wide variation of compatible modules and extensive configuration possibilities allows flexible combinations for any application.

Installation is done by sliding the modules into guide rails, while connections are made using board-edge connections. This allows simple and fast installation without requiring additional internal wiring or complex configuration. When inserted to a supporting slot, the module is instantly installed, discovered and ready for operation.

## MFA series compatible SourceCon™ modules \*

 <p><b>MMP40</b> Media Player &amp; Recorder Module</p>	 <p><b>FMP40</b> Voice File Media Player Module</p>	 <p><b>BMP40</b> Professional Bluetooth Module</p>
 <p><b>DMP40</b> DAB+ &amp; FM Tuner Module</p>	 <p><b>TMP40</b> FM Tuner Module</p>	 <p><b>IMP40</b> Linum™ technology inside Internet Audio Player Module</p>
 <p><b>NMP40</b> Audio Streaming Module</p>		

\* SourceCon™ modules optionally available. MFA series does not come pre-installed with one of these modules.

# ALTI series

## 2-way pendant speakers

The ALTI series are two-way pendant loudspeakers, designed for background and foreground music applications with open architectures and high ceilings. Typical applications are big scale retail environments, warehouses and other large open spaces.

The elegant construction is finished using high grade materials and fitted with premium acoustic components. This guarantees clear speech intelligence and a warm and detailed sound reproduction.

Mounting the speaker is done through a connection cable with two integrated steel cores for suspending with an additional drop safety. Fixation is made through two snap-hooks on one end and a dual Grippler™ fixation on the other end. The included cable length of 3.5 meters offers possibilities for a wide variety of ceiling heights. An innovatively designed rear cover of the speaker can be placed after installation and hides the connection and suspension on the speaker end. The ceiling end connections are covered through a cable cover.



*“Pure sound,  
hanging around.”*





## ALTI4

The ALTI4 is a 2-way pendant loudspeaker featuring a 4" driver combination with an coaxially mounted 1" soft dome tweeter and is fitted with a phase plug for excellent off axis performance.

The 2-way combination with a high quality polypropylene enclosure and acoustic engineering craftsmanship guarantees premium performance for demanding applications. A continuous power handling of 30 Watt (RMS) and maximum power handling of 60 watt is achieved. Connections a made through a terminal block connector behind the rear cover, accompanied with a power tap selector switch for tapping of the 70V/100V line transformer with tapings for 24W, 12W, 6W and a 16 Ohm bypass connection.



## ALTI6

The ALTI6 is a 2-way pendant loudspeaker featuring a 6.5" driver combination with an coaxially mounted 1" soft dome tweeter and is fitted with a phase plug for excellent off axis performance.

The 2-way combination with a high quality polypropylene enclosure and acoustic engineering craftsmanship guarantees premium performance for demanding applications. A continuous power handling of 60 Watt (RMS) and maximum power handling of 120 watt is achieved. Connections a made through a terminal block connector behind the rear cover, accompanied with a power tap selector switch for tapping of the 70V/100V line transformer with tapings for 60W, 30W, 15W and a 16 Ohm bypass connection.

- ▶ Innovative rear cover
- ▶ Suspension cable with dual steel core
- ▶ Ceiling cable cover
- ▶ Rotary selector switch

	Max power	RMS power	Power taps / Impedance	Speaker type	Driver size	Dimensions (Ø x cable length only)
ALTI4	60W	30W	24W / 12W / 6W / 16 Ω	2-way coaxial	4"	Ø 170 mm x 3500 mm
ALTI6	120W	60W	60W / 30W / 15W / 16 Ω	2-way coaxial	6.5"	Ø 230 mm x 3500mm



### Wide opening angle

The wide opening angle of the speaker guarantees an exceptional dispersion in all different kinds of applications and locations with high ceilings and large open spaces. The carefully matched components and construction guarantee optimal coverage over the entire frequency range. This makes sure both music and speech are clear and true-to-nature audible throughout any place in the venue.

### Secure mounting system

The unique mounting system features a connection cable with conductors and a steel suspension and safety wire in a single outer jacket. This offers the cleanest and most elegant solution for connecting and mounting the loudspeaker.

The construction with two snap hooks on one end and a dual Gripple™ locking system on the other end offers the most flexible solution for mounting, no matter whether fixation has to be done through an eye-bolt, around a beam or at any other possible anchor point. The length of 3.5 meters offers possibilities for high ceilings, while it can be shortened if necessary.



### Power taps

A rotary selector switch located behind the rear covers selects the setting between low impedance and 70V/100V use, while adjustments in tapings are easily made, even after already installed and connected.

“Don’t feel like  
hanging around?”

## ALTI4M



The ALTI4M is a variant of the pendant speakers, featuring a die-cast mounting bracket for wall & ceiling mount purposes. This allows the same audio system design and identity for throughout the entire installation in case some area’s are not allowing pendant solutions being used due to the ceiling heights or structures. Acoustics and construction are identically crafted, while connections are made through AWX-5 connectors.

70/100V 16 Ohm

/B M

### Endless application possibilities

The unique, contemporary curved design provides a stylish look with plenty of versatility. The ALTI4M offers numerous mounting options and a wide range of different configurations, providing an endless variety of versatile placement options in terms of mounting and coverage.



Ceiling mount



Wall mount



# CELO8S

High-end 8" ceiling subwoofer



## CELO8S

The CELO8S is the next step in our journey to provide an impeccable musical atmosphere. This 8" ceiling subwoofer is fitted with a stiff and light aluminum membrane, minimizing ceiling vibrations and resulting in energetic depths from above, while the open back design enables the CELO8S to reproduce low frequencies in the most natural way possible. Its integrated stereo crossover enables you to effortlessly connect your satellite speakers, resulting in the absolute finest full-range sound experience in the most efficient way possible.

8 Ohm



	Max power	RMS power	Max SPL	Sensitivity 1W / 1 m	Drivers	Freq response +- 3 dB	Cut-out dimensions	Dimensions
CELO8S	2 x 100W	2 x 50W	103 dB	83 dB	8" Aluminum	45 Hz - 200 kHz	Ø 250 mm	Ø 275 x 120 mm



① Phase switch

Depending on the acoustical properties of your room and placement of the subwoofer, the sub can be better integrated into your room when switched to either 0° or 180° by adjusting the phase switch. We recommend 0° when all speakers are mounted in a flat wall or ceiling.



② Balance correction switch

When installed with accompanying satellite speakers, the volume of these satellites relative to the subwoofer can be increased and decreased by 3 dB, according to the installation setup and preferred sound.



# SENSO series

## In-ceiling solutions

### SENSO82.4S

4 x CELO2, 1x CELO8S, 1 x EPA152

Available colours:  



The tiny and nearly invisible design of the CELO2 speakers makes the SENSO series set one of the most compact high-end in-ceiling audio solutions with subwoofer that will draw your attention only through its extraordinary sound.

Supported by the CELO8S 8" ceiling subwoofer that delivers detailed and punchy bass, while the open back design enables the CELO8S to reproduce low frequencies in the most natural way possible. It comes fitted with an integrated stereo crossover that enables you to effortlessly connect your satellite speakers, resulting in the absolute finest full-range musical atmosphere.

Powered by the EPA152 energy efficient Class-D stereo amplifier this system, using four CELO2 loudspeakers, can cover areas of around 100 m<sup>2</sup> with clear and powerful background music.



More SENSO solutions :

- [SENSO82.8S](#)  
8 x CELO2 8Ω, 1 x CELO8S, 1 x EPA152







# KYRA series

## Design column speakers

The KYRA column speakers range is the elegant result of research in the field of phased array acoustics. The selection of the highest quality materials including aluminum cone 2" drivers guarantee an extraordinary detail and clarity for music and speech, which is uncommon for any kind of column speaker available from the market. It makes them perfectly lend themselves to a wide variety of applications in acoustic difficult environments such as churches, auditoria, presentation and meeting rooms where audibility and intelligibility of music and speech have the highest importance.

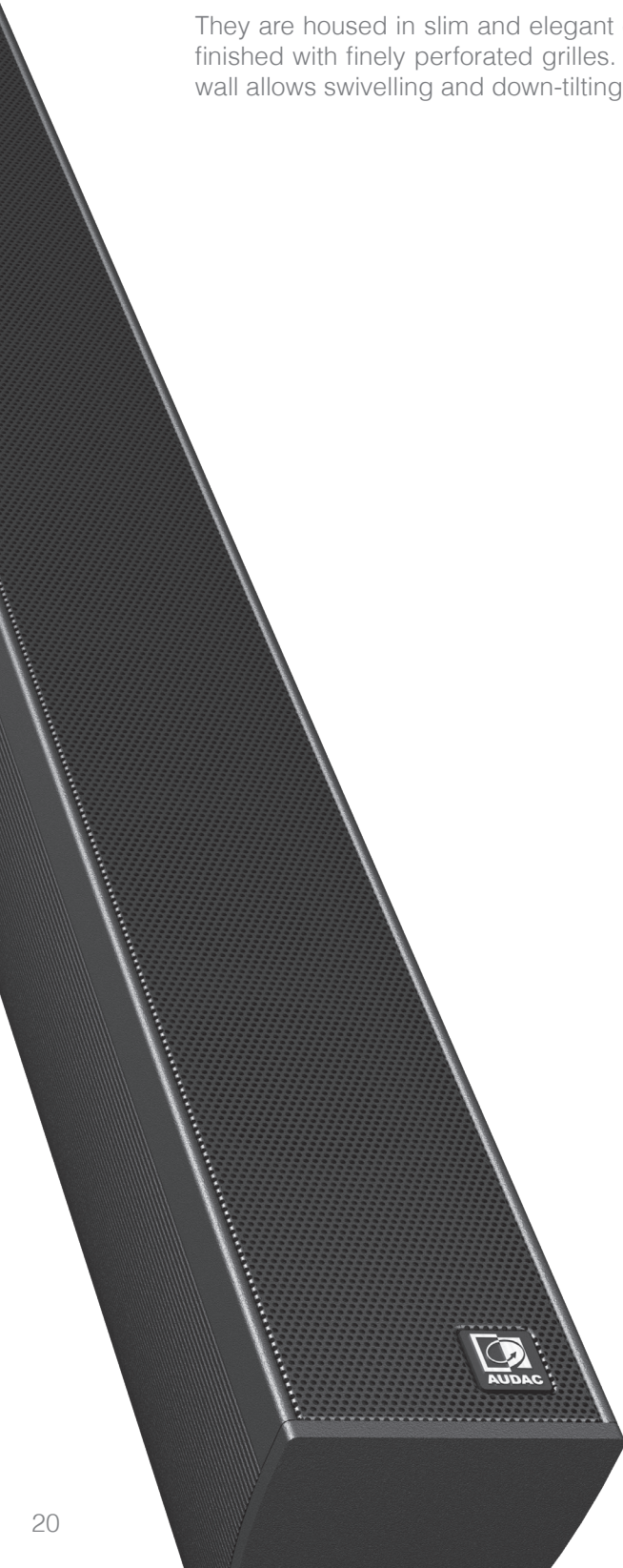
They are housed in slim and elegant constructed enclosures made out of aluminum materials and finished with finely perforated grilles. An included mounting bracket with minimum distance to the wall allows swivelling and down-tilting for perfect directional placement.



### KYRA6

The KYRA6 design column speaker consists of 6 x 2" high-quality aluminium cone full-range drivers, delivering extraordinary clarity and detailed sound. The overall continuous power handling reaches 60 Watt and the beamwidth of 170° x 45° makes it the perfect match for acoustically difficult venues, reducing echo and microphone feedback which optimizes the speech intelligibility in reverberant venues.

A multi-tapping line transformer allows it to be connected to 70V/100V public address systems with different power taps for 20W, 10W and 5W and/or low impedance (12Ω) systems.







## KYRA12

The KYRA12 design column speaker consists of 12 x 2" high-quality aluminium cone full-range drivers, delivering extraordinary clarity and detailed sound. The overall continuous power handling reaches 120 Watt and the beamwidth of 170° x 20° makes it the perfect match for acoustically difficult venues, reducing echo and microphone feedback which optimizes the speech intelligibility in reverberant venues.

A multi-tapping line transformer allows it to be connected to 70V/100V public address systems with different power taps for 40W, 20W and 10W and/or low impedance (12Ω) systems.



## KYRA24

The KYRA24 design column speaker consists of 24 x 2" high-quality aluminium cone full range drivers, delivering an extraordinary clarity and detailed sound. The overall continuous power handling reaches 120 Watt and the beam width of 170° x 10° makes it the perfect match for acoustically difficult venues, reducing echo and microphone feedback which optimizes the speech intelligibility in reverberant venues.

The overall impedance of the speaker measures 4Ω, allowing it to be implemented in any low impedance audio system.



	Max power	RMS power	Max SPL	Sensitivity 1W / 1 m	Power taps	Freq range -10 dB	Dimensions
KYRA6	120W	60W	106 dB	90 dB	20 / 10 / 5W / 12 Ω	120 Hz - 20 kHz	70 x 546 x 101 mm
KYRA12	240W	120W	113 dB	92 dB	40 / 20 / 10W / 12 Ω	120 Hz - 20 kHz	70 x 1006 x 101 mm
KYRA12/O	240W	120W	113 db	92 dB	40 / 20 / 10W / 12 Ω	120 Hz - 20 kHz	70 x 1006 x 101 mm
KYRA24	480W	240W	114 dB	92 dB	4 Ω	120 Hz - 20 kHz	70 x 2006 x 101 mm

# LINO series

## Column speakers

The LINO series are column speaker series designed for a wide variation of general purpose applications in acoustic difficult environments, ranging from speech and announcement applications to background music systems. Typical applications are houses of worship, auditoria, presentation rooms, public transportation hubs, ... and many more.

They are solid constructed using solid aluminum materials and finished through a rigid finely perforated front grill. Mounting is done through an L-shaped bracket on top and bottom, offering optimal flexibility for fixation and directional placement. Connections are made through terminal block connections.



### LINO4

The LINO4 column speaker consists of 4 x 2" low/mid frequency drives with an 1" central positioned tweeter for the high frequencies. It reaches a power handling of 20 Watt, while a multi-tapping line transformer allows it to be connected in 70V/100V public address systems with power taps for 20W, 10W and 5W.



### LINO10

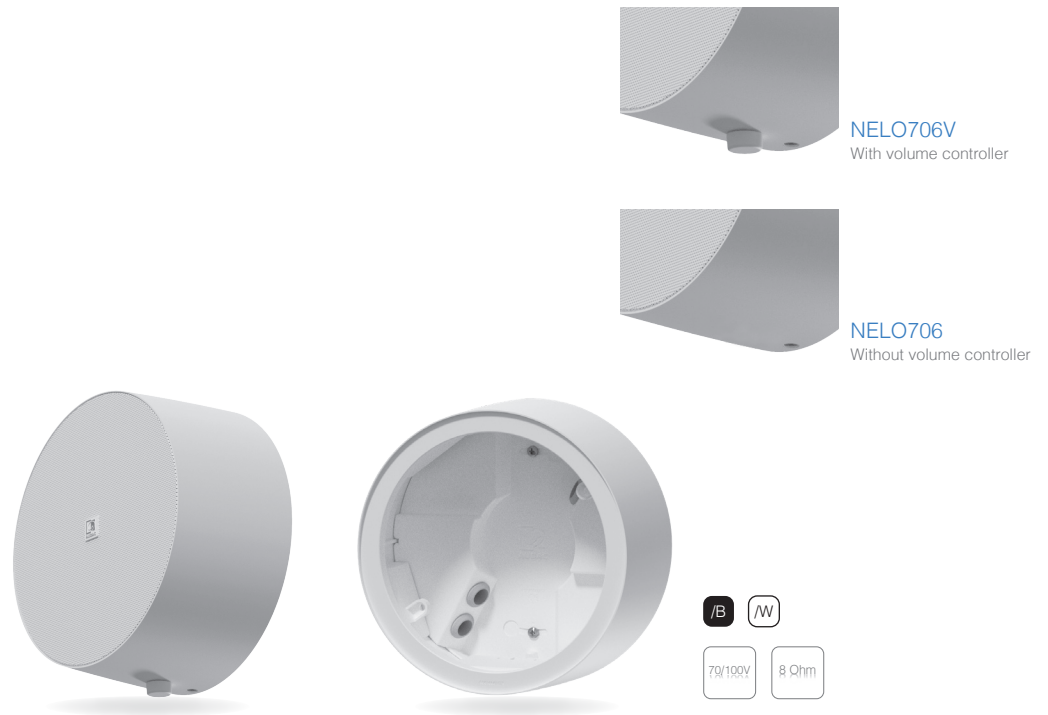
The LINO10 column speaker consists of 10 x 2" low/mid frequency drives with an 1" central positioned tweeter for the high frequencies. It reaches a power handling of 40 Watt, while a multi-tapping line transformer allows it to be connected in 70V/100V public address systems with power taps for 40W, 20W and 10W.



	Max power	RMS power	Sensitivity 1W / 1 m	Power taps @ 100V	Power taps @ 70V	Frequency response +/- 3 dB	Dimensions
LINO4	40W	20W	91 dB	20 / 10W	20 / 10 / 5W	170 Hz - 15 kHz	414 x 72 x 68 mm
LINO10	80W	40W	92 dB	40 / 20W	40 / 20 / 10W	170 Hz - 15 kHz	796 x 72 x 68 mm

# NELO series

## Surface-mount loudspeakers



### NELO706

The NELO706 surface-mount loudspeakers allow installation to any wall or ceiling where functional and cost-efficient reproduction for music & speech is required. It features a 6.5" broadband loudspeaker with a continuous power handling of 10 Watt (RMS) and is fitted with a line transformer for use in 70V/100V public address systems with power tapings for 6W and 3W.

The housing is minimalistic and elegant designed with a very narrow border and a finely perforated steel grill on the front. Connections are made through SnapConnect™ terminals, offering a faster, more reliable and safer choice for fixed installations.

The NELO706 are available in various models with (NELO706V) and without (NELO706) individual volume controller on its side while being available in two different colors (Black /B & White /W) to blend in with any residential, commercial or industrial environment.

### Pendant mounting kit



### CSK100

The CSK100 is an optional suspension kit, allowing the NELO series speakers being used as a pendant loudspeaker solution. The triangular steel wire construction can be screwed into the threaded bushings on the rear side of the NELO series speakers, while a 3.5 meters long steel wire allows it to be fixed to any possible ceiling or surface. This offers a fast and easy solution for converting the NELO series into an entry-level pendant solution.

# MBK556

## Mounting pole for outdoor speaker

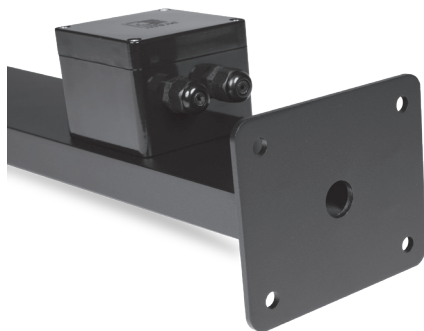


The MBK556 is a slim and durable bi-directional mounting solution designed specifically for the AUDAC WX series outdoor loudspeakers\*. Two WX series loudspeakers can be mounted on opposite sides, creating optimal coverage in all directions.

The construction is made out of aluminum materials and finished with a textured and weather resistant black powder coating. A weatherproof junction box with an access hole for the internal wiring to the loudspeaker(s), allows it to be installed in permanent outdoor installations, while cable guiding throughout its structure results in a very elegant end result.

The base plate allows durable installation on any kind of solid surface while pre-drilled installation holes for WX302 and WX502 series loudspeakers provide the optimal installer convenience.

\* WX series loudspeakers not included with MBK556.



# ATEO2S

## ATEO2 with surface ceiling mount



A combination of your trusted ATEO2 speaker and a specially designed surface ceiling mount with Clickmount™ technology.

**ATEO2S** : ATEO2 with surface ceiling mount

**ATEO2SD** : ATEO2D with surface ceiling mount

All available in black (B) and white (W).



# RMA40A

## Light track adapter mount for ATEO4



The RMA40A is an adapter for assembling ATEO4 loudspeakers on light rails which are commonly used in installations such as retail environments. It comes with an included WMA adapter, offering optimal possibilities for inclination in any direction. A mechanical connection is provided, without having any electrical connection between the loudspeaker and the light rail.

It is compatible with 3-phase lighting tracks from most major brands including Global trac and Eutrac.





# WMM series

## Speaker back box



### WMM630

The WMM630 is a speaker back box made out of medium-density fibreboard (MDF) allowing installation for a wide variety of ceiling or in-wall loudspeakers. It provides an ideal environment for the installed speakers while reducing the radiation of sound to adjacent rooms.

The dimensions of 345 x 545 x 150 mm allow it being placed in between a wide variation of wall studs or ceiling beams. It features an internal volume of 21 litres and comes with a pre-cut speaker cutout with a diameter of Ø 150 mm, and pre-marked circular cutouts up to Ø 250 mm. The corners are provided with L-brackets for easy assembly to any kind of stud or beam and it comes pre-fitted with acoustic damping material for optimal acoustic performance.



## Looking for the right solution?

With this interactive audio configurator we want to facilitate your search for the optimal AV solution for your custom projects. The audio configurator provides you a quick way to browse all AUDAC solutions. Complete with custom filter options and multi-device support.

[audac.eu/audio-configurator](http://audac.eu/audio-configurator)





### Matrix Systems

With innovation at the base of AUDAC's development, the brand offers comprehensive, expandable and powerful solutions for almost every situation.



### Amplifiers

AUDAC offers a wide range of digital multi-channel amplifiers for single and multi-zone systems.



### Modular audio systems

AUDAC pays great attention to its multimedia sources. The development of cutting edge digital audio technology has led to a complete range of sources that will inspire you!



### Microphones

From the most robust hand-held or headset microphones to advanced paging systems, AUDAC provides you with the right extension for your voice.



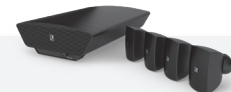
### Surface mount loudspeakers

The perfect match for fixed audio installations in modern environments, AUDAC offers different sizes of elegantly designed loudspeaker solutions.



### Flush mount loudspeakers

Exceptional sound quality and value for a wide variation of applications. The extensive range of flush mount loudspeakers exists out of 5 different series that are complementary to one another.



### Complete audio solutions

AUDAC offers a wide range of custom audio solutions. Pre-assembled loudspeakers packages specially and acoustically designed for each project.

Looking for advice or a custom solution?

✉ [info@audac.eu](mailto:info@audac.eu)

📘 [facebook.com/audacaudio](https://facebook.com/audacaudio)

📷 [instagram.com/audac\\_audio](https://instagram.com/audac_audio)

📺 [youtube.com/audacaudio](https://youtube.com/audacaudio)

