

## Highlights:

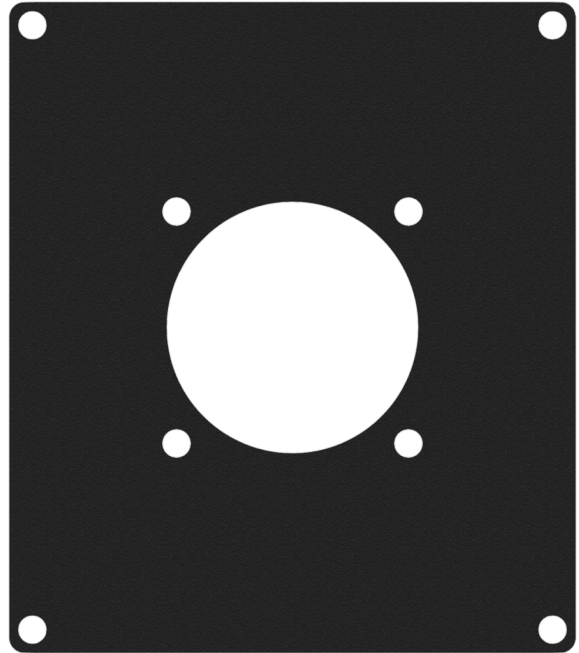
---

- Structured and scratch resistant black powder coating
- Assembly screws included
- Compatible with any CASY chassis
- Flexible system for system integration & connectivity
- 1.5 mm thick cold rolled steel plate

## Product information:

---

The CASY205 module features one hole to fit a G-size connector. This flexible structure for system integration & connectivity can easily be implemented in a wide variety of CASY chassis.



## Product Features:

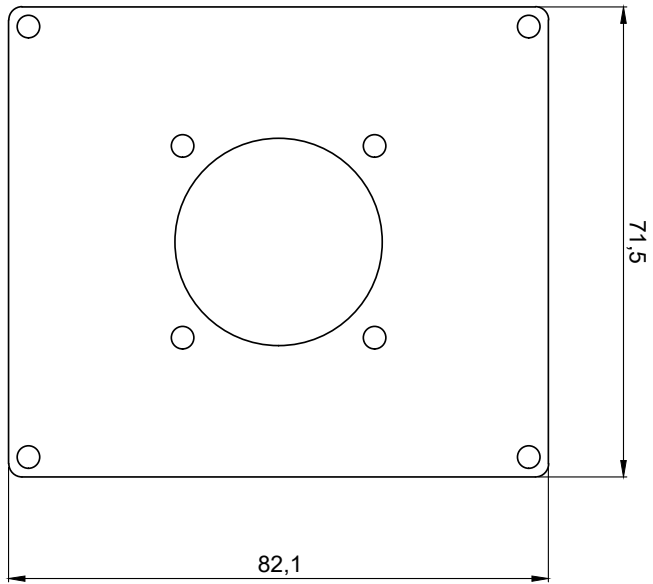
---


Dimensions	28.15 x 32.32 " (W x H)	
Cut-out measurement	1.22 " (Ø)	
Module	Space	2

## Variants:

---

- CASY205/B - Black version



	<b>CASY205</b>	<b>Product description:</b> CASY 2 SPACE COVER PLATE - 1 X G-SIZE CONNECTOR HOLE (31 MM)	<b>Weight:</b> TBA	<b>Outer dimensions:</b> (w x h x d) 71,5 x 82,1 x 1,5	<b>Unit height:</b> 2 HE